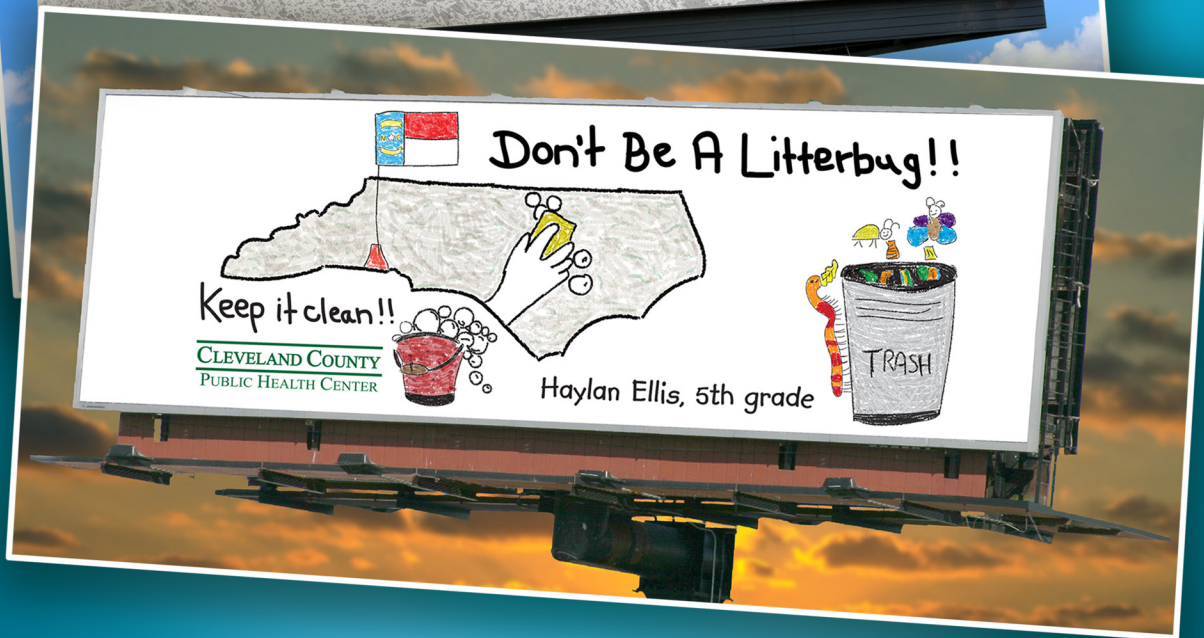


# CLEVELAND COUNTY CONNECTION



## Cleveland County Kids Take on Litter



CLEVELANDCOUNTY.COM

# CLEVELAND COUNTY CONNECTION

CLEVELAND COUNTY CONNECTION IS A PUBLICATION OF CLEVELAND COUNTY GOVERNMENT INTENDED TO HELP YOU CONNECT WITH GOVERNMENT SERVICES AND PERSONNEL THAT ARE HERE FOR YOU.

Connect with us online!



Cleveland County Commissioners	p.3	Soil & Water Conservation	p.17
Local, State and Federal Elected Officials	p.4	NC Cooperative Extension	p.19
Cleveland County Administration	p.5	Animal Services	p.20
Planning Department	p.6	Cleveland County Library System	p.21
Tax Administration	p.7	Cleveland County Economic Development Partnership	p.22
Veteran Services	p.8	LeGrand Center	p.24
Register of Deeds	p.9	North Carolina Court System	p.25
Building Inspections	p.10	Cleveland County's Sheriff's Department	p.26
Public Health Center	p.11	E-911 Services	p.27
Live Healthy Cleveland County	p.12	Emergency Management	p.28
Childhood and Adult Immunizations	p.13	Emergency Medical Services	p.29
Cleveland County Kids Take on Litter	p.14	Foothills Public Shooting Complex	p.30
Landfill and Recycling	p.16	Cleveland County Directory	p.32

# ELECTED OFFICIALS

Elected officials represent you and your community. Knowing who your elected officials are will enable you to reach out and share your ideas and opinions with people who make our local and state's laws.

## Cleveland County Commissioners

County Commissioners establish the property tax rate, regulate land use and zoning outside municipal jurisdictions, and adopt an annual budget every year that includes operating budget and capital funds for public schools.

The Cleveland County Commissioners meet on the first and third Tuesday of every month, at 6:00 p.m. in the Commissioner's Chambers on the 2nd floor of the County Administration Building located at 311 East Marion Street in Shelby.



**SUSAN ALLEN**  
CHAIRMAN  
(704) 564-7562  
susank.allen@clevelandcounty.com



**RONNIE WHETSTINE**  
COMMISSIONER  
(704) 477-7594  
ronnie.whetstine@clevelandcounty.com



**JOHNNY HUTCHINS**  
COMMISSIONER  
(704) 477-0997  
johnny.hutchins@clevelandcounty.com



**DOUG BRIDGES**  
COMMISSIONER  
(704) 472-8312  
doug.bridges@clevelandcounty.com



**DEB HARDIN**  
COMMISSIONER  
(704) 472-1626  
deb.hardin@clevelandcounty.com



# ELECTED OFFICIALS



## Local Elected Officials

### ALAN NORMAN SHERIFF

704-484-4788  
100 Justice Place  
Shelby, NC 28150  
alan.norman@clevelandcounty.com

### MITZI JOHNSON CLERK OF COURT

704-476-7800  
100 Justice Place  
Shelby, NC 28150  
mitzi.m.johnson@nccourts.org

### BETSY HARNAGE REGISTER OF DEEDS

704-484-4834  
311 East Marion Street  
Shelby, NC 28150  
rod.info@clevelandcounty.com

### MIKE MILLER DISTRICT ATTORNEY

704-476-7810  
100 Justice Place  
Shelby, NC 28150  
michael.w.miller@nccourts.org



## State Elected Officials

### TIM MOORE SPEAKER NC HOUSE OF REPRESENTATIVES

919-733-3451  
16 W. Jones Street, Room 2304  
Raleigh, NC 27601  
tim.moore@ncleg.net

### KELLY HASTINGS REPRESENTATIVE NC HOUSE OF REPRESENTATIVES

919-715-2002  
16 W. Jones Street, Room 1206  
Raleigh, NC 27601  
kelly.hastings@ncleg.net



## Federal Elected Officials

### RICHARD BURR SENATOR US SENATE

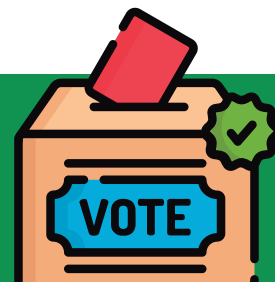
202-224-3154  
217 Russell Senate Office Building  
Washington, DC 20510  
@SenatorBurr

### THOM TILLIS SENATOR US SENATE

202-224-6342  
185 Dirken Senate Office Building  
Washington, DC 20510  
@ThomTillis

### PATRICK MCHENRY REPRESENTATIVE US HOUSE OF REPRESENTATIVES

202-225-2576  
2334 Rayburn House Office Building  
Washington, DC 20515  
@PatrickMcHenry



## BOARD OF ELECTIONS

215 Paton Drive • Shelby, NC 28150 • 704-484-4858

The next few pages share Departments located within the Administrative Building, located at 311 East Marion Street in Shelby.



## CLEVELAND COUNTY ADMINISTRATION

311 EAST MARION STREET | SHELBY, NC 28150 | 704-484-4900

### BRIAN EPLEY COUNTY MANAGER

704-484-4800  
311 East Marion Street  
Shelby, NC 28150  
brian.epley@clevelandcounty.com

### KERRI MELTON ASSISTANT COUNTY MANAGER

704-484-4816  
311 East Marion Street  
Shelby, NC 28150  
kerri.melton@clevelandcounty.com

### APRIL CROTTTS ASSISTANT TO THE COUNTY MANAGER

704-484-4800  
311 East Marion Street  
Shelby, NC 28150  
april.crotts@clevelandcounty.com

### SHANE FOX CHIEF FINANCIAL OFFICER

704-484-4811  
311 East Marion Street  
Shelby, NC 28150  
shane.fox@clevelandcounty.com

### PHYLLIS NOWLEN CLERK TO THE BOARD OF COMMISSIONERS

704-484-4766  
311 East Marion Street  
Shelby, NC 28150  
phyllis.nowlen@clevelandcounty.com

### ALLISON MAUNEY HUMAN RESOURCES DIRECTOR

704-484-4935  
311 East Marion Street  
Shelby, NC 28150  
allison.mauney@clevelandcounty.com



Check out the Cleveland County job link at

**CLEVELANDCOUNTY.COM/JOBS/PVL**  
or call 704.484.4819



If interested in bidding on county services please see

**CCNCGOV.COM/FINANCED/BIDDERS**  
or call 704-484-4840



# PLANNING DEPARTMENT

311 EAST MARION STREET | SHELBY, NC 28150 | 704-484-4979



## Zoning

704-484-4975

The Planning Department provides direction to citizens and developers to ensure compliance with land use policies and codes. Compatible land uses are grouped into districts to regulate future development. The most common form of land-use regulation is zoning.

Visit the Zoning Department for the following:

- Zoning Permit
- Zoning Map Amendment
- Conditional Use Permit
- Variance
- Appeal of Administrator's Decision



## Street Addressing

704-484-4975

Cleveland County County law requires all properties to be identified by a uniform numbering system in order to assist public safety personnel when locating a business or residence.



## Mapping (GIS)

704-484-4962

An interactive mapping system is available online through the county home page, [www.clevelandcounty.com](http://www.clevelandcounty.com) or you may access the site directly at [arcgis.webgis.net/nc/Cleveland](http://arcgis.webgis.net/nc/Cleveland). Information is available on a variety of topics including aerial photography, cemeteries, contours, flood plains, historic properties, land sales, school districts, tax data, watersheds, zoning, etc.



## Historic Preservation

704-484-4947

The County maintains an inventory of 1,355 historic properties throughout Cleveland County. The Shelby inventory was compiled in 1983, and the remainder of the county was inventoried in 1997-98. The Historic Preservation Commission reviews applications for local historic landmarks. A Certificate of Appropriateness is required to alter the exterior of a local landmark. If you have any questions please call the number above.



## Greenways

704-434-0040 - Broad River

704-484-4947 - Gateway Trail

The county continues to develop a network of greenways to connect citizens with destinations.

**Broad River Greenway:**

13 miles of natural surface trail

**Gateway Trail:**

7 miles of paved/gravel trail

# BUILDING INSPECTIONS

311 EAST MARION STREET | SHELBY, NC 28150 | 704-484-4997



## Building Permits

704-484-4997

The primary mission of the Building Inspections Department is to enhance the quality of life for all citizens in Cleveland County by providing for their health, safety and welfare through the effective and efficient administration of the North Carolina State Building Code and applicable local ordinances. The department reviews construction plans, schedules inspections, tracks permit and inspection data, inspects for code compliance.

In our office you can apply for a:

- Building Permit
- Electrical Permit
- Mechanical Permit



## Minimum Housing Code Violations

704-484-4997

The Building Inspections Department is tasked with upholding the Minimum Housing Code of Cleveland County. This includes proper zoning adherence and maintaining minimum standards for housing. If you have a concern about a dwelling within the County's jurisdiction, please call the number listed above.



## Environmental Health Permits

980-484-5130

The Environmental Health Division of Cleveland County Public Health is charged to promote and protect public health through the enforcement of local and state public health and environmental health laws, rules and regulations. Educational and consultation services support the enforcement program.

You may contact our Environmental Health division staff regarding the following programs:

- Septic permits
- Water well permits
- Public pools
- Rat complaints
- Public Health Preparedness
- Grave Disinterment
- Inspections for food service, meat markets, lodging, child care, rest homes, institutions or facilities



## Find Building Inspection Forms Online At:

[clevelandcounty.com/ccmain/building-inspections](http://clevelandcounty.com/ccmain/building-inspections)

  
**HAVE QUESTIONS?**  
Visit our website at  
[www.clevelandcounty.com](http://www.clevelandcounty.com)  
or call 704-484-4900



# VETERANS SERVICES

311 EAST MARION STREET | SHELBY, NC 28150 | 704-484-4803



## Veterans Services can help you with the following:

- Order a copy of your DD-214
- Enrollment in the VA healthcare program
- File claims for compensation
- Check eligibility for Pension, Widow's Pension, and for Aid and Attendance
- Adding dependents to your award with the VA
- Check eligibility for Burial Benefits and Grave Markers
- Apply for Scholarships for children of wartime, disabled or deceased Veterans

There is a County Veterans Service Officer ready to help you with your questions and concerns. Please call to see what Veterans Services can do for you.



## Who is eligible:

You may be eligible for VA benefits if you are a:

- Veteran
- Veteran's dependent
- Surviving Spouse, child or parent of a deceased veteran



Veterans Services exists to aid veterans of the United States military who are no longer active duty servicemen and their families. Services for veterans can range from housing assistance to pension and healthcare.

### WHITE HOUSE VA HOTLINE: 1-855-948-2311.

Calls are answered by a live agent 24 hours a day, seven days a week, 365 days a year. The hotline is staffed by more than 60 agents who have had extensive training on VA programs and services. Ninety-three percent of these agents are a Veteran, military family member, caregiver or a survivor.

# REGISTER OF DEEDS

311 EAST MARION STREET, ROOM 151 | SHELBY, NC 28150 | 704-484-4834

The Register of Deeds Office is responsible for organizing and keeping information regarding real property including:

## Vital Records

- Birth Certificates
- Out of County Birth Certificates (1971 +)
- Death Certificates
- Marriage License
- DD 214 Military Discharge
- Thank-a-Vet

## Land Record Recordings

- Assumed Business Names
- Deeds
- Deeds of Trust
- Satisfactions
- Power of Attorneys
- Plats
- Notary Public Oaths
- Essements and many more



## WE TAKE PASSPORT PHOTOS

APPOINTMENTS

AVAILABLE

TUESDAY - FRIDAY

9 AM - 12 PM

1 PM - 4 PM

## Passport Acceptance Facility

A passport acceptance facility is authorized by the U.S. Department of State to accept and verify the documents, applicant signature and identity for passport applications. Our office offers:

- Passport photos for new and renewal
- New adult passport applications
- Child (minor) passport applications
- Lost, stolen, or damaged passport

Routine processing for a passport is 4-6 weeks. If you need your passport faster than 4-6 weeks, you will need to have it expedited.

To find out more info or to schedule an appointment call 704-484-4780 or email: [Passports@ClevelandCounty.com](mailto:Passports@ClevelandCounty.com)



# TAX ADMINISTRATION

311 EAST MARION STREET | SHELBY, NC 28150 | 704-484-4843

 **REAL PROPERTY**  
704-476-3003

 **PERSONAL PROPERTY**  
704-484-4846

 **BUSINESS PROPERTY**  
704-476-3083

 **MAPPING**  
704-484-4849

 **COLLECTIONS**  
704-484-4843

 **OFFICE HOURS**  
Monday - Friday  
8:00 A.M. - 5:00 P.M.

The Cleveland County Tax Office is proud to serve the 98,000 plus county citizens across 469 square miles including 15 municipalities.

Each fall, the tax office mails and is responsible for collecting over 54,000 tax notices. The Cleveland County Tax Collector is responsible for the timely collection and disposition of real and personal property taxes within the County in accordance with North Carolina General Statutes. Chris Green is the Tax Administrator and Necole' E. Richard serves as the Tax Collector.

Our knowledgeable and experienced staff looks forward to serving you.

**NECOLE' E. RICHARD**  
TAX COLLECTOR  
Necole.Richard@clevelandcounty.com

**CHRIS GREEN**  
TAX ADMINISTRATOR  
chris.green@clevelandcounty.com  
Phone: 704-484-4843  
Fax: 704- 484-4917

## Pay your taxes online with the Cleveland County Tax Administrator Website

Our redesigned web site offers our citizens a number of new features including an Address Change Request feature, a user friendly tax record lookup, and a Tax Estimator where citizens can estimate their taxes online. Our Online Tax Web Site has achieved outstanding success since its launch in 2004, providing over 543,000 page views in 2008 alone

[www.clevelandcountytaxes.com](http://www.clevelandcountytaxes.com)



The next few pages share Departments located within the Cleveland County Public Health Center, located at 200 South Post Road in Shelby.



## PUBLIC HEALTH CENTER

200 S. POST ROAD | SHELBY, NC 28152 | 980-484-5100

The mission of the Cleveland County Public Health Center is to assure, enhance and protect the health of its citizens through education and prevention.

The health department accomplishes this through a variety of services that include:



### Community Services

- Animal Control
- Animal Lost and Found
- Asthma
- Carolina Community Health Partnership

- Environmental Health
- Health Education
- Solid Waste
- Pharmacy



### Clinical Services

- Adult Health/ General Clinic
- Child Health
- Dental
- Diabetes Plus
- Family Planning
- Immunizations
- Maternal Health
- Nurse Family Partnership
- School Health
- WIC & Nutrition



## COMMUNITY SERVICES

200 S. POST ROAD | SHELBY, NC 28152 | 984-484-5100



### Live Healthy Cleveland County

The Cleveland County Public Health Center and its partners are excited to announce the availability of LiveHealthyClevelandCounty.com. Live Healthy Cleveland County is a website that promotes increased opportunities for healthy eating and physical activity wherever people live, learn, earn, play and pray.

Whether you are a mother looking for a stroller-friendly track to take an afternoon walk, a grandparent looking for a playground to take your grandchildren, or a family looking to explore a nature trail, there is now a one-stop shop where you can find all of these physical activity opportunities and more. Perhaps you would like to know where you can get fresh fruits and vegetables in the closest proximity to your home or work, or tips on how to prepare the vegetables you purchased at the local farmer's market. Local resources to answer these healthy eating questions and so many more are now at the tip of your fingertips. Visit [www.livehealthyclevelandcounty.com](http://www.livehealthyclevelandcounty.com) and take the first step to living healthy in Cleveland County!

## CLINICAL SERVICES

200 S. POST ROAD | SHELBY, NC 28152 | 984-484-5100



### Childhood and Adult Immunizations

The Cleveland County Public Health Center offers childhood, adult and foreign travel vaccines. All required and recommended vaccines are available for infants, school aged children and college bound individuals. We also provide a wide range of vaccines for adults and provide travel immunizations and health information for international travelers. Please visit our website at [www.clevelandcounty.com/cchd/immunizations](http://www.clevelandcounty.com/cchd/immunizations) for a listing of available vaccines. No appointment is necessary for child or adult immunizations. To schedule an appointment for foreign travel vaccinations or for more information, contact our Immunization Clinic at 980-484-5154.

For up-to-date immunization schedules,  
**VISIT [WWW.IMMUNIZE.NC.GOV](http://WWW.IMMUNIZE.NC.GOV).**



# Cleveland County Kids take on Litter



## Local Students Aim to Prevent Littering Through Billboard Contest

Cleveland County Board of Commissioners recognized the winners of the Don't Be A Litterbug billboard contest for Cleveland County students in grades K – 5. Participants were divided into two grade categories, K-2 and 3-5, with the top 3 winners being selected from each category. The 1st place winner from each category had their designs turned into billboards that are displayed in Cleveland County for six months. All winners were awarded certificates by our County Commissioners and were commended for helping to spread the word about the importance of not littering. A total of 249 contest entries were received and judged by a panel of local professionals.

The winners are as follows:

### Grades K - 2 Category

**1st Place - Caleb Crotts**  
Kindergarden  
Fallston Elementary

**2nd Place - Minyan Ou**  
2nd grade  
Fallston Elementary

**3rd Place - Jadan Burns**  
2nd grade  
Washington Elementary

### Grades 3 - 5 Category

**1st Place - Haylan Ellis**  
5th grade  
Shelby Intermediate School

**2nd Place - Sadie Oliver**  
5th grade  
Shelby Intermediate School

**3rd Place - Annie Byers**  
5th grade  
Pinnacle Classical Academy

“ We hope the community will take heed in these messages portrayed by our young people. ”

DeShay Oliver,  
Public Information Officer,  
Cleveland County  
Public Health Center

This contest was sponsored by Cleveland County Government and the Cleveland County Public Health Center as part of a larger litter prevention initiative set forth by the County. Cleveland County Commissioner Susan Allen states, “Cleveland County is committed to reducing the negative effects of litter around the county. The County Retail Task Force initiated the litter contest to ask for participation from the youth in our schools. The success of this contest reflects the amount of importance the community places on litter collection and prevention, and we are excited to continue to improve the natural beauty of our county through various programs and initiatives.” DeShay Oliver, Public Information Officer with the Cleveland County Public Health Center, said, “We strategically chose to kick off this initiative by engaging elementary and intermediate school-aged children because we felt like they would be instrumental in talking

with their parents and other caregivers about the importance of not littering. By having them participate in this contest, not only did we reach the students, but hopefully their families as well. Moreover, the future of our county is in their hands. If we can instill good habits in them while they are young, hopefully this will be carried with them into adulthood.” The billboards will serve as an additional means to get their anti-littering messages out to the larger community. “A common theme that was seen throughout almost all contest entries was the importance of protecting our planet and taking pride in our community. “We hope the community will take heed in these messages portrayed by our young people,” said Oliver. The contest sponsors would like to extend a special thank you to our schools for helping to promote the contest, and to all of the students who took the time to design and submit entries.



**1st Place**  
**Caleb Crotts**  
Kindergarden  
Fallston Elementary



**1st Place**  
**Haylan Ellis**  
5th grade  
Shelby  
Intermediate School



# LANDFILL AND RECYCLING

250 FIELDING ROAD | CHERRYVILLE, NC 28021 | 704-447-8200



## DID YOU KNOW...

- The average family throws away 4 pounds of garbage per day
- Recycling helps preserve our natural resources, reduces pollution and saves energy
- Recycling aluminum uses 95% less energy than producing aluminum products from raw materials
- Recycling a glass jar saves enough energy to light a 100-watt light bulb for four hours
- For every ton of paper that is recycled, we save 17 trees
- 75,000 trees are used for the Sunday edition of the New York Times each week

## RECYCLING CENTERS

- 1. Landfill**   
1609 Airport Rd. • Shelby  
704-480-5508
- 2. Boiling Springs**   
2944 Old Cliffside Rd. • Mooresboro  
704-434-7441
- 3. Polkville**   
4732 Peyton Place Rd. • Polkville  
704-538-0772
- 4. Midpines**   
615 Margrace Rd. • Kings Mountain  
704-739-5184
- 5. Lawndale**   
307 Casar-Lawndale Rd. • Lawndale  
704-538-0879
- 6. Earl**   
2522 Blacksburg Rd. • Grover  
704-480-5513



- 7. Lutz**   
230 Vic Randall Rd. • Lawndale  
704-538-0609
- 8. Oak Grove**   
1127 Oak Grove Rd. • Kings Mountain  
704-739-1903
- 9. Cleveland County City of Shelby**   
307 Market St. • Shelby  
704-480-5516

**Operating Hours**  
Monday - Saturday  
8 a.m. - 7 p.m.  
Sunday • Closed

= Recyclables  
 = Household Waste



## Household Hazardous Waste Day

Cleveland County offers an annual household hazardous waste day where citizens can come and drop off items that normally are not accepted at the landfill. These items include:

- Aerosol cans
- Pesticides
- Pool chemicals
- Drain and oven cleaner
- Brake fluid
- Car batteries
- Paint
- Motor oils
- Turpentine
- Rat poison
- Prescription and Over the Counter Medication
- Much more!



## Electronic Recycling (E-WASTE)

- Cleveland County has electronic recycling trailers at all centers
- Items like computers, televisions, printers, cell phones, stereos, and other various electronics must be placed in electronics recycling and NOT in the landfill

**For a full description of what waste items are accepted at our landfill please visit: [clevelandcounty.com/cchd/solidwaste](http://clevelandcounty.com/cchd/solidwaste)**

Please visit [clevelandcounty.com/cchd/solidwaste](http://clevelandcounty.com/cchd/solidwaste) to find out the date for 2019.

# SOIL & WATER CONSERVATION

844 WALLACE GROVE ROAD | SHELBY, NC 28150 | 704-471-0235 (EXT. 3)



The Soil and Water Conservation District works with farmers to prevent erosion and run-off and improve soil health and water quality. To achieve this goal, we provide advice, technical assistance and financial assistance through cost-share programs. Educational outreach about conservation is another important goal of the District, and we conduct several outreach programs through local schools and civic groups.



## Farmland Protection Plan

Agriculture in Cleveland County is big business, accounting for more than \$127 million in agricultural products sold, and it also is a big part of the heritage of Cleveland County. The Soil and Water Conservation District released their updated Farmland Protection Plan in March of 2016, which details strategies on how to keep Cleveland County's farmlands a priority.



## What are these Strategies?

- The Farmland Protection Plan has identified several areas to boost farmland vitality in Cleveland County. Below are the plan's suggestions:
- Promote Farmland protection through Present Use Value Taxation
  - Voluntary Agricultural Districts and Enhanced Voluntary Agricultural Districts
  - Promote and educate on land taxation, estate planning, conservation easements and development planning
  - Support agricultural training and education at the K-12 and Community College levels
  - Support marketing and production training to facilitate greater diversity
    - Identify and Prioritize farmland that is at risk and develop preservation strategies
    - Strengthen support for agricultural economic development
    - Strengthen disaster preparedness for avian influenza and other natural disasters
    - Continue Promotion of Best Management Practices for conservation of land and resources

For more information: [www.clevelandcounty.com/ccconservation](http://www.clevelandcounty.com/ccconservation)



# DEPARTMENT OF SOCIAL SERVICES

130 S. POST ROAD | SHELBY, NC 28152 | 704-487-0661



## Our Mission

The primary theme that unites each of these statements is Citizen Advocacy.

- To provide children a safe, permanent family
- To protect and serve vulnerable disabled adults
- To help families become self-sufficient
- To help eligible families obtain medical and food assistance



## Services

- Adoption services
- Adult services
- Child day care
- Child protective services
- Child support
- Energy assistance
- Foster care
- Food and nutrition services
- Medicaid
- Program integrity
- Services for the blind
- Work first



## Energy Assistance



### Low Income Energy Assistance Program

The Low Income Energy Assistance Program (LIEAP) is a Federally-funded program that provides for a one-time vendor payment to help eligible households pay their heating expense.



### Crisis Intervention Program

The Crisis Intervention Program (CIP) is a Federally-funded program that provides assistance to eligible households that are in a heating or cooling related emergency. The goal of the CIP program is to help families stay warm in the winter and cool in the summer. By doing so, this reduces the risk of health and safety problems such as illness, fire, or eviction.

**You can call to see if funds are available:  
(704)487-0661, ext 394**

# NC COOPERATIVE EXTENSION

130 S. POST ROAD | SHELBY, NC 28152 | 704-482-4365



## Mission

North Carolina Cooperative Extension partners with communities to deliver education and technology that enrich the lives, land and economy of North Carolina. Extension professionals in 100 counties and the Cherokee Reservation provide education and technical assistance based on research from the state's land-grant universities: NC State University and NC A&T State University.



## Vision

Extension is responsive. When the needs of people, communities, the environment and the economy change, so does Extension. Extension is dynamic. We use the latest technology to provide relevant, practical programs and technical assistance. Extension is multi-faceted. Our lives, our land and our economy are interdependent. Extension's programs and professionals work together to meet today's complex challenges.



## Agriculture Examples

- Commercial & consumer horticulture
- Traditional agriculture
- Livestock
- Organic agriculture



## Food Examples

- Community & school gardens
- Food safety
- Food preservation
- Nutrition & health
- Local foods



## 4-H Youth Development

- STEM (Science, Technology, Engineering & Math)
- Leadership
- Life skills
- Healthy lifestyles





# ANIMAL SERVICES

1601 AIRPORT ROAD | SHELBY, NC 28150 | 704-481-9884

The Animal Services exists to protect the public's health against the spread of rabies. This is done through rabies vaccinations, impoundment and humane euthanasia.



## Want to adopt a pet?

Cleveland County Animal Services has streamlined the process to make your pet adoption as easy as possible! Follow these easy steps to adopt an animal from the shelter:

- Check out a pictorial list of dogs and cats available for adoption online at our website, facebook, or just come on by!
- Select the animal you want and decide your adoption package, ranging from \$60-\$120.



## Get on the bus with us!

Cleveland County is now offering low cost Spay/Neuter services to Cleveland County residents. Services include spaying or neutering of dogs or cats, rabies shots and microchipping.

## Checkout our website for dates in 2019.



## Free Rabies Vaccination Clinics

Cleveland County Animal Services offers four (4) free rabies vaccination clinics throughout the year at various locations, typically in August, October, March and May. Call for specific dates and times.

### Cat Services

- CAT SPAY (female) \$60.00
- CAT NEUTER (male) \$40.00
- RABIES \$10.00
- MICROCHIP \$20.00

### Dog Services

- DOG SPAY (female) \$75.00
- DOG NEUTER (male) \$65.00
- RABIES \$10.00
- MICROCHIP \$20.00

For more info: [clevelandcounty.com/cchd/animal-control](http://clevelandcounty.com/cchd/animal-control)

[FACEBOOK.COM /CLEVELANDCOUNTY.ANIMAL.CONTROL](https://www.facebook.com/clevelandcounty.animal.control)



# CLEVELAND COUNTY LIBRARY SYSTEM

104 HOWIE DRIVE | SHELBY, NC 28150 | 704-487-9069



It is the mission of the Cleveland County Library System to offer access to a comprehensive collection of materials, in a safe and welcoming environment, to encourage social, economic, cultural and intellectual growth. Through the careful use of resources and a knowledgeable staff, the library will contribute to the overall quality of life and meet the ever-changing needs of the citizens of Cleveland County.

## Cleveland County Memorial Library

104 Howie Drive, Shelby NC 28150 | 704-487-9069

Monday - Thursday .....10am - 8pm  
Friday - Saturday .....10am - 2pm

## Spangler Branch Library

112 Piedmont Drive, Lawndale NC 28090 | 704-538-7005

Monday - Wednesday ..... 2pm - 6pm  
Thursday ..... 9am - 6pm  
Friday ..... Closed  
Saturday ..... 9am - 1pm

## Mauney Library

100 S. Piedmont Ave. Kings Mountain, NC | 704-739-2371

Monday & Tuesday ..... 9am - 8pm  
Wednesday & Thursday ..... 9am - 6pm  
Friday ..... 9am - 5pm  
Saturday ..... 9am - 1pm

## The Library at the Ruby C. Hunt YMCA

1322 Patrick Avenue, Shelby, NC 28152 | 704-669-3648

Monday - Thursday .....10am - 6pm





# CLEVELAND COUNTY ECONOMIC DEVELOPMENT PARTNERSHIP

LEGRAND CENTER, 1800 E. MARION ST | SHELBY, NC 28152 | 704-669-4701



The primary of CCEDP is that it allows its investors to impact Cleveland County's growth and development. Additionally, CCEDP promotes the interaction and networking of a community's resources, provides a forum to address local economic and business issues, and creates a system through which entrepreneurs, local business owners, and government officials can increase their investment in the community.



[ccedp.com](http://ccedp.com)



## Cleveland County Economic Development Partnership

works to actively recruit new industry and create a healthy and diverse environment for existing, expanding, and new businesses in Cleveland County. CCEDP works to promote the county as a single economic entity while providing information and services to large scale industries and small businesses. CCEDP also strives to work in a complementary manner with local and regional economic development projects.

No manufacturing experience? No problem. The opportunities to start small and grow big in Cleveland County are endless. Don't wait - find your dream job today in Cleveland County.

[CharlottesBackyardNC.com](http://CharlottesBackyardNC.com)



# LEGRAND CENTER

1800 EAST MARION STREET | SHELBY, NC 28150 | 704-669-4700



As Shelby, North Carolina's premier event venue, LeGrand Center offers a unique variety of customizable options for your extraordinary event. Specializing in everything from small business meetings held in our conference rooms to serving up to a thousand guests in our expansive Grand Ballroom, LeGrand Center is the ideal venue for any special event! LeGrand's towering 55-foot glass walls, exquisite terrazzo floors, and brilliant interior, compliment the metal-and-glass architectural features that are prominent throughout. Sweeping outdoor vistas create a modern backdrop that plays host to a multitude of bold architectural elements that can be found throughout the building. The possibilities are endless at LeGrand. Let us help you Experience YOUR Extraordinary Event!

## The LeGrand Center is available for:

- Weddings
- Meetings
- Parties
- Special Events
- Trade Shows
- Industrial Meetings

## Room Rentals Include:

- Set Up/Break Down
- Tables
- Chairs
- Glassware
- Flatware
- Linens
- Podium
- Audio/Visual (Indoor & Outdoor)



[TheLeGrandCenter.com](http://TheLeGrandCenter.com)

The next few pages share Departments located within The Cleveland County Law Enforcement Center



## NORTH CAROLINA COURT SYSTEM

100 JUSTICE PLACE | SHELBY, NC 28150 | 704-476-7800



### Court House Hours of Operation

Monday .....	8:30 AM - 5:00 PM
Tuesday .....	8:30 AM - 5:00 PM
Wednesday .....	8:30 AM - 5:00 PM
Thursday .....	8:30 AM - 5:00 PM
Friday .....	8:30 AM - 5:00 PM
Saturday .....	Closed
Sunday .....	Closed



### Going to court?

If you or somebody you know is about to go to court, we can help guide you through the process. Find court dates, directions to the courthouse, jury service information, and other information about going to court by visiting: [nccourts.gov/going-to-court](http://nccourts.gov/going-to-court)



### I missed my court date. What do I do?

You may contact the clerk of court's office of the county in which you were charged to ask about the local procedure for having your case rescheduled. If you are represented by counsel, you also may contact your attorney.

Note that following a failure to appear, criminal process may be issued against you and substantial additional fees may be assessed. If you are charged with a motor vehicle offense, your failure to appear may result in the revocation of your drivers license and the N.C. Division of Motor Vehicles (NCDMV) may assess additional fees against you. If a cash bond was required and posted, the bond will be forfeited, and the NCDMV will treat your failure to appear as a conviction that may result in points against your driving and insurance records or license revocation.





## CLEVELAND COUNTY SHERIFF'S OFFICE

100 JUSTICE PLACE | SHELBY, NC 28150 | 704-484-4788



The Cleveland County Sheriff's Office believes in community involvement and in continually improving its relationship with Cleveland County citizens. To that end the Sheriff's Office has a ten week program called the Sheriff's Citizen Academy. This academy is designed to provide residents of Cleveland County with insights into the responsibilities and operations of the Sheriff's Office.

### What subjects are presented at the Citizen Academy?

- Overview of the Sheriff's Office
- Uniform Patrol Operations and Communications
- Criminal Investigations and Sex Offender Registry
- Crime Scene Investigations
- Detention Center, Court Security and Civil Process
- Vice, Narcotics and Immigration Customs Enforcement
- Crime Prevention, School Resource Officers and DARE
- Special Operations like K-9 and Special Emergency Response Team
- Solid Waste Enforcement

To find out more about the next Citizens Academy please contact Lieutenant Jon Wright or Major Phillip Todd  
**704-484-4788**



For Emergencies 911



Community Watch 704-476-3053



Crime Stoppers 704-481-TIPS



Community Policing 704-476-3053

## E-911 SERVICES

100 JUSTICE PLACE | SHELBY, NC 28150 | 704-484-4822



The Communications Center provides

**24 hour access to all 911 and non-emergency Public Safety services, such as Fire, Police and Emergency Medical Services.**

### When calling 911 please have this information ready:

- Nature of the call (Why you are calling)
- Your location (Where you are)
- Details: (What happened and who was involved)

**call if you can text if you can't!**



### Non-Emergency Numbers of Interest:

Cleveland County Sheriff's Office:.....704-484-4788	City of Shelby:.....704-484-6840
North Carolina Highway Patrol:.....800-572-8765	City of Kings Mountain:.....704-734-0735
Cleveland County Animal Control:.....704-481-9884	Cleveland County Water:.....704-538-9033
Duke Energy:.....800-POWERON (800-769-3766)	Rutherford Electric:.....704-435-5401



# EMERGENCY MANAGEMENT

100 JUSTICE PLACE | SHELBY, NC 28150 | 704-484-4841



## EMERGENCY MANAGEMENT

is responsible for ensuring proper government response in the event of an emergency or natural disaster. It is imperative that citizens be prepared for themselves and their families.



### Hyper-Reach

Hyper Reach is an emergency notification system that sends you a text or voice message to alarm you in case of an emergency that will affect you based on where you live.

### To sign up for Hyper-Reach:

- Go to [www.clevelandcounty.com](http://www.clevelandcounty.com)
- Look for the hyper-reach logo and click on it
- Enter your name, address and the phone number you'd like to have the emergency message sent to
- If you choose text messages as the option, make sure the number you enter is a cell phone that can accept them

# EMERGENCY MEDICAL SERVICES

100 JUSTICE PLACE | SHELBY, NC 28150 | 704-476-3019



## Ten Hot Weather Safety Tips:

1. **Stay hydrated.** Drink plenty of fluids; drink about 16 ounces before starting and 5 to 7 ounces every 15 or 20 minutes.
2. **Avoid dehydrating liquids.** Alcohol, coffee, tea and caffeinated soft drinks can hurt more than help.
3. **Wear protective clothing.** Lightweight, light-colored and loose-fitting clothing helps protect against heat. Change clothing if it gets completely saturated.
4. **Pace yourself.** Slow down and work at an even pace. Know your own limits and ability to work safely in heat.
5. **Schedule frequent breaks.** Take time for rest periods and water breaks in a shaded or air conditioned area.
6. **Use a damp rag.** Wipe your face or put it around your neck.
7. **Avoid getting sunburn.** Use sunscreen and wear a hat if working outside.
8. **Be alert to signs of heat-related illness.** Know what to look for and check on other workers that might be at high risk.
9. **Avoid direct sun.** Find shade or block out the sun if possible.
10. **Eat smaller meals.** Eat fruits high in fiber and natural juice. Avoid high protein foods.



## Rescue Squads

### **KINGS MOUNTAIN LIFESAVING & RESCUE**

P.O. Box 362 | Kings Mountain, NC 28086 | 704- 739-2077

### **SHELBY RESCUE SQUAD INC.**

P.O. Box 777 | Shelby, NC 28150 | 704- 487-7237

### **UPPER CLEVELAND LIFESAVING & RESCUE**

P.O. Box 278 | Lawndale, NC 28090 | 704-538-7911





# FOOTHILLS PUBLIC SHOOTING COMPLEX

283 FIELDING ROAD | CHERRYVILLE, NC 28021 | 704-447-8230  
 WWW.FOOTHILLSPUBLICSHOOTING.CC



## LARGEST PUBLIC OUTDOOR SHOOTING COMPLEX IN THE SOUTHEASTERN UNITED STATES

### 85 Acre Campus

- Ranges:
- Precision Rifle- 250 x 50 yd.
- Handgun- 25 x 20 yd.
- Handgun/Rifle- 50 x 50 yd.
- Multi-Purpose- 50 x 50 yd.
- Multi-Purpose/Skeet/Trap- 50 x 50 yd.
- Skeet/Trap- 50 x 50 yd.
- 3D Archery
- Archery Practice- 20 x 50 yd.
- 3D Archery for Tournaments
- Weapons loading and unloading station

### Range Facilities:

- Range Office/Classroom Training Facilities
- Pro Shop
- Outdoor Pavilion
- Concession Area to accommodate catering services
- Public restroom facilities
- Vending area for drinks and snacks

### Services

- 1 on 1 Instruction: Sighting, Handling, Loading, Cleaning, Shoot weapons
- Corporate team building
- Pre-concealed carry classes

### Available Parking:

- 250 Parking Spaces
- 11 Handicap accessible spaces
- Shuttle services for tournaments

## RANGE NOTICE

### We're expanding our 50-yard rifle range!

To handle the increasing volume of rifle customers at Foothills, we will be adding additional shooting lanes on our 50-yard rifle range! (Range #3) During construction, we plan to minimize the impact on our daily operations. On Wednesdays and Thursdays only, we will have eight 50-yd rifle lanes available. Friday and weekend operations will not be affected. The construction started September 24, 2018. NO OTHER RANGES WILL BE IMPACTED.

RANGE HOURS SUMMER-MARCH THRU OCTOBER	
MONDAY & TUESDAY	CLOSED
WEDNESDAY— SATURDAY	9:30 AM—7:30 PM
SUNDAY	1:30 PM—4:30 PM
NOTE: 250-YD RIFLE RANGE OPENS AT NOON W-FRI, 9:30 SAT, 1:30 SUN.	
RANGE HOURS WINTER-NOVEMBER THRU FEBRUARY	
MONDAY & TUESDAY	CLOSED
WEDNESDAY— SATURDAY	9:30 AM—4:30 PM
SUNDAY	1:30 PM—4:30 PM



**FOOTHILLS PUBLIC SHOOTING COMPLEX**  
 CLEVELAND COUNTY, NC  
 283 FIELDING ROAD CHERRYVILLE, NC 28021 PHONE: (704) 447-8230





# CLEVELAND COUNTY DIRECTORY

## COUNTY ADMINISTRATION

County Administration (main)	704-484-4900
Animal Control	704-481-9884
Building Inspections/Permits	704-484-4997
Clerk to the Board	704-484-4766
Cooperative Extension	704-482-4365
County Commissioners	704-484-4800
County Job Line	704-484-4819
County Manager	704-484-4800
Election Services	704-484-4858
Emergencies	911
Emergency Medical Services	704-476-3019
Finance	704-484-4807
Fire Marshal/Emergency Mgt.	704-484-4841
GIS	704-484-4962
Human Resources	704-484-4833
Economic Development	704-669-4701

## LEGRAND CENTER 704-669-4700

## HEALTH AND HUMAN SERVICES\*

<b>Health Department (main)</b>	980-484-5100
Administration	980-484-5200
Adult Health	980-484-5110
Asthma	980-484-5182
Child Health	980-484-5120
Dental	980-484-5260
Diabetes	980-484-5225
Environmental Health	980-484-5130
Family Planning	980-484-5140
Health Education	980-484-5112
Immunizations	980-484-5154
Maternal Health	980-484-5150
Nurse Family Partnership	980-669-3152
Pharmacy	980-484-5164
School Health	980-484-5211
WIC & Nutrition	980-484-5170
<b>Social Services (main)</b>	704-487-0661
Administration	x 200
Adult Services	704-484-4861
Child Day Care	x 307
Child Protective Services	x 264

Child Support	x 725
Energy Assistance	x 394
Foster Care	x 222
Food and Nutrition Services	x 624
Medicaid	x 624
Program Integrity/Fraud	x 625
Services for the Blind	704-484-4871
Work First	x 315

## LIBRARIES

CC Memorial Library	704-487-9069
Spangler Branch Library	704-538-7005
Mauney Memorial Library	704-739-2371
Ruby C Hunt YMCA Library	704-434-0441

## PASSPORTS 704-484-4780

## PLANNING/ZONING 704-484-4947

## REGISTER OF DEEDS 704-484-4834

## SHERIFF'S OFFICE

<b>Sheriff's Office (main)</b>	704-484-4788
Crime Stoppers	704-481-TIPS
Detention Center	704-484-4889
Neighborhood Watch	704-476-3053
Weapons Permit	704-484-4763

## SOIL AND WATER CONSERVATION DISTRICT SOLID WASTE 704-471-0235 x. 3

<b>Solid Waste (main)</b>	704-447-8200
Household Hazardous Waste	704-447-8200
Landfill	704-447-8200

## RECYCLING CENTERS

Boiling Springs	704-434-7441
Earl	704-480-5513
Landfill	704-480-5508
Lawndale	704-538-0879
Lutz	704-538-0609
Midpines	704-739-5184
Oak Grove	704-739-1903
Polkville	704-538-0772
Shelby	704-480-5516
Foothills Public Shooting Complex	704-447-8230

## TAX DEPARTMENT

Collections	704-484-4843
Business Personal Property	704-476-3083
Mapping	704-484-4849
Personal Property	704-484-4846
Real Property	704-476-3003
<b>VETERAN SERVICES</b>	704-484-4803

Arts Council	704-484-2787
Chamber of Commerce	704-487-8521
City of Shelby Utilities	704-484-6866
City of Kings Mountain Utilities	704-734-0735
Cleveland Community College	704-669-6000
Council on Aging	704-484-3488

## COURT SYSTEM

<b>Court System (main)</b>	704-476-7800
Clerk of Court	704-476-7800
Child Support	704-476-7806
Civil District	704-476-7803
Criminal District	704-476-7802
Estates	704-476-7804
District Attorney	704-476-7810
District Court Judge	704-476-7812
Guardian ad Litem	704-476-7821
Magistrate	704-476-7819
Superior Court Judge	704-476-7816

<b>CLEVELAND COUNTY WATER</b>	704-538-9033
Cleveland County School System	704-476-8000
Department of Labor	800-NC-LABOR
Department of Transportation	980-552-4420
Driver's License Office	704-480-5409



**CLEVELANDCOUNTY.COM**