

Sample Ballot  
Cleveland County, North Carolina  
November 5, 2024

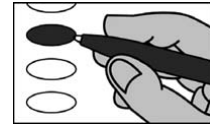
B0019



PCT: S S\_SHELBY SOUTH

BALLOT MARKING INSTRUCTIONS

- A. With the marking device provided or a black ball point pen, completely fill in the oval to the left of each candidate or selection of your choice as shown.
- B. Where authorized, you may write in a candidate by filling in the oval and writing the name on the Write-in line.
- C. If you tear, deface or wrongly mark this ballot, return it to request a replacement.



SAMPLE BALLOT  
SAMPLE BALLOT  
SAMPLE BALLOT  
SAMPLE BALLOT  
SAMPLE BALLOT  
SAMPLE BALLOT  
SAMPLE BALLOT  
SAMPLE BALLOT  
SAMPLE BALLOT  
SAMPLE BALLOT  
SAMPLE BALLOT  
SAMPLE BALLOT  
SAMPLE BALLOT

SAMPLE BALLOT  
SAMPLE BALLOT  
SAMPLE BALLOT  
SAMPLE BALLOT  
SAMPLE BALLOT  
SAMPLE BALLOT  
SAMPLE BALLOT  
SAMPLE BALLOT  
SAMPLE BALLOT  
SAMPLE BALLOT  
SAMPLE BALLOT  
SAMPLE BALLOT  
SAMPLE BALLOT

PARTISAN ELECTIONS		
<b>President and Vice President of the United States</b> (You may vote for ONE)	<b>NC Lieutenant Governor</b> (You may vote for ONE)	<b>NC Secretary of State</b> (You may vote for ONE)
<input type="radio"/> <b>Kamala D. Harris</b> Tim Walz <i>Democratic Party</i>	<input type="radio"/> <b>Rachel Hunt</b> <i>Democratic Party</i>	<input type="radio"/> <b>Elaine Marshall</b> <i>Democratic Party</i>
<input type="radio"/> <b>Chase Oliver</b> Mike ter Maat <i>Libertarian Party</i>	<input type="radio"/> <b>Wayne Jones</b> <i>Constitution Party</i>	<input type="radio"/> <b>Chad Brown</b> <i>Republican Party</i>
<input type="radio"/> <b>Jill Stein</b> Rudolph Ware <i>Green Party</i>	<input type="radio"/> <b>Hal Weatherman</b> <i>Republican Party</i>	<b>NC Superintendent of Public Instruction</b> (You may vote for ONE)
<input type="radio"/> <b>Randall Terry</b> Stephen E. Broden <i>Constitution Party</i>	<input type="radio"/> <b>Shannon W. Bray</b> <i>Libertarian Party</i>	<input type="radio"/> <b>Maurice (Mo) Green</b> <i>Democratic Party</i>
<input type="radio"/> <b>Donald J. Trump</b> JD Vance <i>Republican Party</i>	<b>NC Attorney General</b> (You may vote for ONE)	<input type="radio"/> <b>Michele Morrow</b> <i>Republican Party</i>
<input type="radio"/> <b>Cornel West</b> Melina Abdullah <i>Justice for All Party</i>	<input type="radio"/> <b>Jeff Jackson</b> <i>Democratic Party</i>	<b>NC Treasurer</b> (You may vote for ONE)
<input type="radio"/> _____ Write-in	<input type="radio"/> <b>Dan Bishop</b> <i>Republican Party</i>	<input type="radio"/> <b>Wesley Harris</b> <i>Democratic Party</i>
<b>US House of Representatives District 14</b> (You may vote for ONE)	<b>NC Auditor</b> (You may vote for ONE)	<input type="radio"/> <b>Brad Briner</b> <i>Republican Party</i>
<input type="radio"/> <b>Pam Genant</b> <i>Democratic Party</i>	<input type="radio"/> <b>Bob Drach</b> <i>Libertarian Party</i>	<b>NC Supreme Court Associate Justice Seat 6</b> (You may vote for ONE)
<input type="radio"/> <b>Tim Moore</b> <i>Republican Party</i>	<input type="radio"/> <b>Jessica Holmes</b> <i>Democratic Party</i>	<input type="radio"/> <b>Jefferson G. Griffin</b> <i>Republican Party</i>
<b>NC Governor</b> (You may vote for ONE)	<input type="radio"/> <b>Dave Boliek</b> <i>Republican Party</i>	<input type="radio"/> <b>Allison Riggs</b> <i>Democratic Party</i>
<input type="radio"/> <b>Mark Robinson</b> <i>Republican Party</i>	<b>NC Commissioner of Agriculture</b> (You may vote for ONE)	<b>NC Court of Appeals Judge Seat 12</b> (You may vote for ONE)
<input type="radio"/> <b>Mike Ross</b> <i>Libertarian Party</i>	<input type="radio"/> <b>Sean Haugh</b> <i>Libertarian Party</i>	<input type="radio"/> <b>Tom Murry</b> <i>Republican Party</i>
<input type="radio"/> <b>Vinny Smith</b> <i>Constitution Party</i>	<input type="radio"/> <b>Sarah Taber</b> <i>Democratic Party</i>	<input type="radio"/> <b>Carolyn Jennings Thompson</b> <i>Democratic Party</i>
<input type="radio"/> <b>Josh Stein</b> <i>Democratic Party</i>	<input type="radio"/> <b>Steve Troxler</b> <i>Republican Party</i>	<b>NC Court of Appeals Judge Seat 14</b> (You may vote for ONE)
<input type="radio"/> <b>Wayne Turner</b> <i>Green Party</i>	<b>NC Commissioner of Insurance</b> (You may vote for ONE)	<input type="radio"/> <b>Ed Eldred</b> <i>Democratic Party</i>
	<input type="radio"/> <b>Natasha Marcus</b> <i>Democratic Party</i>	<input type="radio"/> <b>Valerie Zachary</b> <i>Republican Party</i>
	<input type="radio"/> <b>Mike Causey</b> <i>Republican Party</i>	
	<b>NC Commissioner of Labor</b> (You may vote for ONE)	
	<input type="radio"/> <b>Luke Farley</b> <i>Republican Party</i>	
	<input type="radio"/> <b>Braxton Winston II</b> <i>Democratic Party</i>	
		<b>Continue voting next side</b> →

SAMPLE BALLOT  
SAMPLE BALLOT  
SAMPLE BALLOT  
SAMPLE BALLOT  
SAMPLE BALLOT  
SAMPLE BALLOT  
SAMPLE BALLOT  
SAMPLE BALLOT  
SAMPLE BALLOT  
SAMPLE BALLOT  
SAMPLE BALLOT  
SAMPLE BALLOT  
SAMPLE BALLOT

Cleveland County, North Carolina	November 5, 2024	Ballot Style B0019
<b>NC Court of Appeals Judge Seat 15</b> (You may vote for ONE)	<b>NC District Court Judge District 39 Seat 6</b> (You may vote for ONE)	<b>REFERENDUM</b>
<input type="radio"/> <b>Chris Freeman</b> <i>Republican Party</i> <input type="radio"/> <b>Martin E. Moore</b> <i>Democratic Party</i>	<input type="radio"/> <b>Justin K. Brackett</b> <i>Republican Party</i>	<b>Constitutional Amendment</b>
<b>NC State Senate District 44</b> (You may vote for ONE)	<b>Cleveland County Board of Commissioners</b> (You may vote for THREE)	Constitutional amendment to provide that only a citizen of the United States who is 18 years of age and otherwise possessing the qualifications for voting shall be entitled to vote at any election in this State.
<input type="radio"/> <b>Henry Herzberg</b> <i>Democratic Party</i> <input type="radio"/> <b>Ted Alexander</b> <i>Republican Party</i>	<input type="radio"/> <b>Kevin Gordon</b> <i>Republican Party</i> <input type="radio"/> <b>Johnny Hutchins</b> <i>Republican Party</i> <input type="radio"/> <b>Stormy L. Mongiello</b> <i>Democratic Party</i> <input type="radio"/> <b>David W. Peace</b> <i>Democratic Party</i> <input type="radio"/> <b>Tony Berry</b> <i>Republican Party</i>  <input type="radio"/> _____ Write-in	
<b>NC House of Representatives District 111</b> (You may vote for ONE)	<b>Cleveland County Board of Education</b> (You may vote for FIVE)	<b>End of Ballot</b>
<input type="radio"/> <b>Paul Scott</b> <i>Republican Party</i> <input type="radio"/> <b>Frances Rollinson Webber</b> <i>Democratic Party</i>		<input type="radio"/> <b>David Fisher</b> <i>Republican Party</i> <input type="radio"/> <b>Ron Humphries</b> <i>Republican Party</i> <input type="radio"/> <b>Coleman Hunt</b> <i>Democratic Party</i> <input type="radio"/> <b>Kenneth A. Ledford</b> <i>Republican Party</i> <input type="radio"/> <b>Rod Powell</b> <i>Democratic Party</i> <input type="radio"/> <b>Tracy Ross</b> <i>Democratic Party</i> <input type="radio"/> <b>Gloria Sherman</b> <i>Republican Party</i> <input type="radio"/> <b>Joel Shores</b> <i>Republican Party</i>
<b>NC Superior Court Judge District 39 Seat 1</b> (You may vote for ONE)		
<input type="radio"/> <b>Sally Kirby-Turner</b> <i>Republican Party</i>	<b>Cleveland County Register of Deeds</b> (You may vote for ONE)	
<b>NC Superior Court Judge District 39 Seat 2</b> (You may vote for ONE)		<input type="radio"/> <b>Betsy S. Harnage</b> <i>Republican Party</i>
<input type="radio"/> <b>W. Todd Pomeroy</b> <i>Republican Party</i>	<b>NONPARTISAN ELECTIONS</b>	
<b>NC District Court Judge District 39 Seat 2</b> (You may vote for ONE)		<b>Cleveland County Soil and Water Conservation District Supervisor</b> (You may vote for ONE)
<input type="radio"/> <b>Brittany Waters Padgett</b> <i>Republican Party</i> <input type="radio"/> <b>Angela Woods</b> <i>Democratic Party</i>	<input type="radio"/> <b>Madison Rachel Bridges</b>  <input type="radio"/> _____ Write-in	
<b>NC District Court Judge District 39 Seat 3</b> (You may vote for ONE)		
<input type="radio"/> <b>Jeannette R. Reeves</b> <i>Republican Party</i>		
<b>NC District Court Judge District 39 Seat 4</b> (You may vote for ONE)		
<input type="radio"/> <b>J. Brad Champion</b> <i>Republican Party</i>		
<b>NC District Court Judge District 39 Seat 5</b> (You may vote for ONE)		
<input type="radio"/> <b>Jamie Hodges</b> <i>Republican Party</i>		

SAMPLE BALLOT  
SAMPLE BALLOT  
SAMPLE BALLOT  
SAMPLE BALLOT  
SAMPLE BALLOT  
SAMPLE BALLOT  
SAMPLE BALLOT  
SAMPLE BALLOT  
SAMPLE BALLOT  
SAMPLE BALLOT  
SAMPLE BALLOT  
SAMPLE BALLOT  
SAMPLE BALLOT